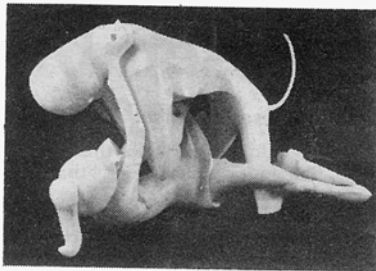


ARTSPEAK

NEW YORK, N.Y. A TWICE A MONTH GALLERY REVIEW Vol. VII, No. 1 SEPTEMBER 1, 1985

SEPTEMBER GALLERY GUIDELIST



Fredi Cohen, "Abuse of Power," polished hydrocal, 5 feet long. This work received first prize in sculpture in the "International Juried Art Competition," judged by Bill King and was recently exhibited in that show at Mussavi Arts Center, 623 Broadway. For inquiries, call 674-3282 or 505-2297.

EAST END DIGEST

EDITED BY BETH YOUNG

Sculpting for the Holidays

The East Hampton Chamber of Commerce will be holding their 15th Annual Holiday Tour of Inns, B&Bs and Special Places on Saturday, December 13.

Featured on the tour this year will be Fredi Cohen's "Archsculpt Studio" in the Northwest Woods. She's created over 5,000 fine art tiles inspired by the local environment. These miniature works of art decorate the whole entrance, stairways and windows, the fireplace and the entire kitchen, from the sculpted sinks to bathtubs, floors and shower walls.

She also creates unique hand-sculpted art furniture, including coffee and end tables. Two highlights of her house are the wall-to-wall massive hand-carved fireplace, which is the centerpiece of the living room, and a floor to ceiling running waterfall, which celebrates the native environment.

The tour will also include the Getaway House, the Osborne Jackson House, the Pollock Krasner House, Guild Hall, the Sea Breeze Inn, William Hand House, the 1170 House, Hedges Inn, Huntting Inn and the Maidstone Arms. For directions and information, call 324-0362.



The fireplace in Fredi Cohen's Archsculpt Studio is designed with handsculpted tile.

to the exquisite home that an East Hampton sculptor has turned into a work of art in itself.



An original, carved, sculpted coffee table created by East Hampton sculptor Fredi Cohen of Archsculpt, is one of many sculpted artworks built into the architecture of her studio. Independent

whirlwind studio tour, is the East Hampton home of Fredi Cohen. Situated in the Northwest Woods, Cohen's studio, called "Archsculpt," is totally unique, and a must see. There is beautiful fine art sculpted and carved into the architecture (both inside and out), as well as in furniture, and free-standing sculptures. The theme of the house/studio (which is a work of art in itself) is "Women, Nature, and Sensuality" — the ultimate symbols of the Hamptons. Much of the work has a very ancient, international quality.

Cohen is doing demonstrations at 2 p.m. each day to explain some of her process in creating and installing all

of the handmade architectural details, such as her fireplace, tiles, sinks, and art furniture.

Another highlight of this week's

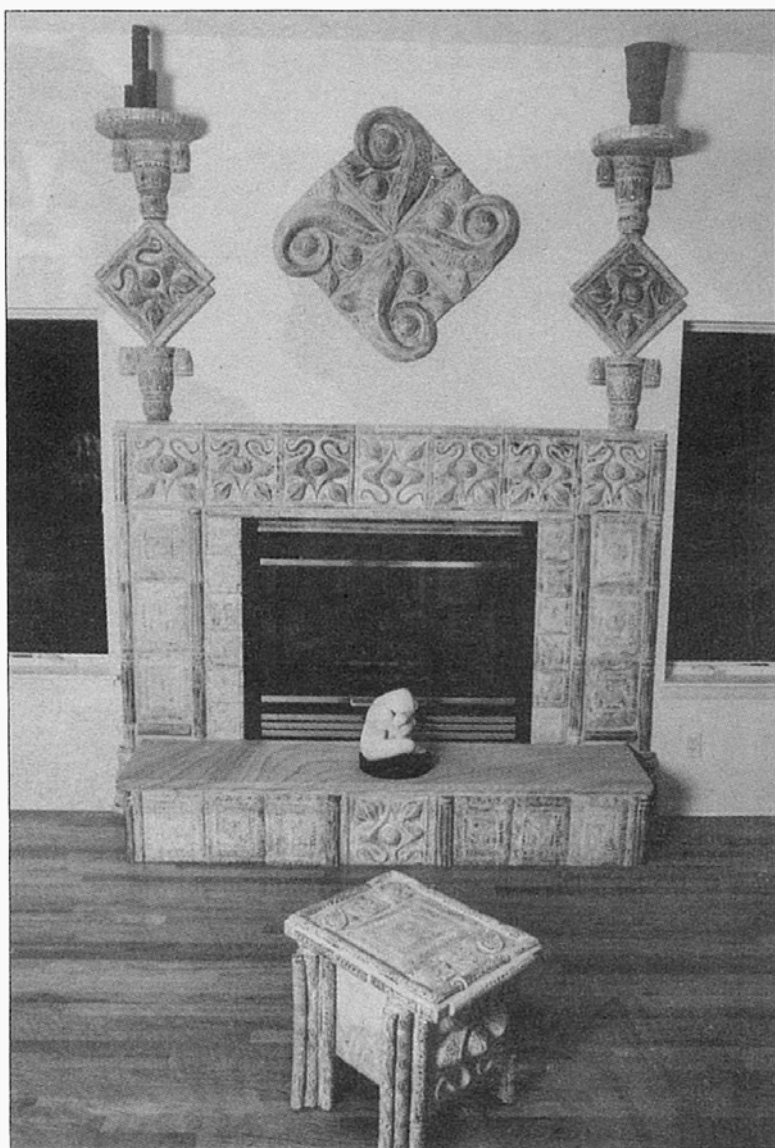
East Hampton Holiday Tour

The 15th Annual Tour of Inns, B&Bs, and Special Places, sponsored by the East Hampton Chamber of Commerce, will take place on Saturday.

Check in at JL East Restaurant and Banquet Room at 103 Montauk Highway and pick up your program between 10:30 and 11:30 a.m., when coffee and donuts will be served. The special places will be open between noon and 4 p.m. Donation: \$25 per person.

Newcomer to the tour this year is Fredi Cohen's "ArchSculpt Studio" at 10 Bay View. Cohen designed, created, and built her one-of-a-kind home as a showcase to incorporate her art, which is built right into both the exterior and interior of the architecture (as shown above.) Another newcomer is the Getaway House, run by proprietor Johnny Kelman. The house will be decorated with a French Country Christmas theme.

Other properties include: The Osborne Jackson House, The Pollock Krasner House, Guild Hall, Sea Breeze Inn, William Hand House, 1170 House, Hedges Inn, Hunting Inn, and Maidstone Arms. Call 324-0362 for more info.



Independent

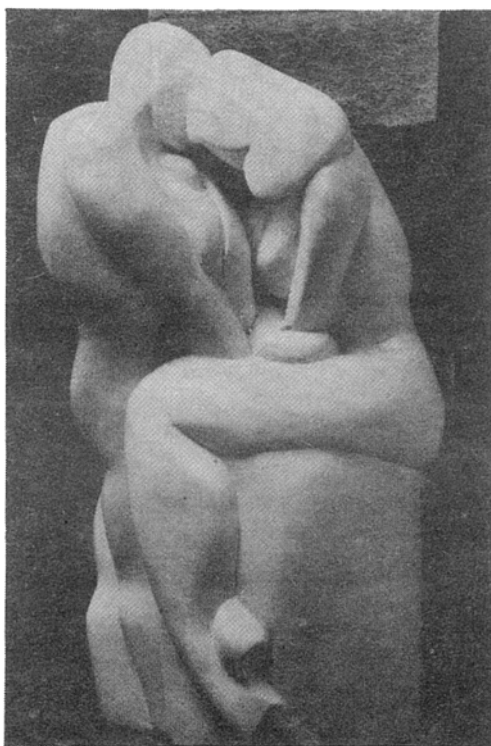
art of the forks

coes, cohen, and tessem at gallery east

By SHARMAN GORDON

Gallery East has slated the opening of its newest exhibition of three artists for Saturday, July 12, from 5 to 7 p.m. The artists featured in this show are Maine artist Rufus Coes, Fredi Cohen of New York City, and Susan Tessem of Maryland.

Susan Tessem's work is concentrated on landscapes viewed through doors or windows. The combination of subtle distortion and her composition creates inventive results. Tessem, a fine draftsman with a flowing and refined technique, uses surrealistic imagery to create a world both familiar and strange. Her piece "Maine Souvenir:



"Family", by Fredi Cohen.

Mount Dessert" offers a view through perpendicular windows of defined dimensions of a blurred and obscured outer reality.

* Cohen's sculptures deal directly with human relations. This New York City resident has the distinction of winning first prize in the International Juried Arts Competition in 1985, judged by Bill King. The winning sculpture was a five foot polished hydrocal sculpture named "Abuse of Power". Cohen's sculptures are sensitive, powerful and aesthetically beautiful as exemplified by the bonded carrera sculpture "Family".

Rufus Coes of Small Point, Maine, has won many

SPOTLIGHT

GUIDE TO ARTS & ENTERTAINMENT

ART EXHIBITIONS

Ann Norton Sculpture Gardens

2051 S. Flagler Drive, West Palm Beach; 832-5328 or ansg.org. Hours: Wednesday through Sunday, 10 a.m. to 4 p.m.

Nine monumental sculptures and more than 100 works by Ann Weaver Norton are featured at her former studio and residence.

"Eye on Photography: A Survey of Contemporary Themes," through Dec. 28.

Armory Art Center

1700 Parker Ave., West Palm Beach; 832-1776; armoryart.org. Hours: 9 a.m.-5 p.m. Mondays through Fridays; 9 a.m.-4:30 p.m. Saturdays.

Chasing the Sun: Dennis Auffer Retrospective, through Dec. 30.

N.A.W.A.: Crossing Boundaries, through Dec. 30.

Cultural Council of Palm Beach County

601 Lake Ave, Lake Worth: 471 2901 or palmbeachculture.com

Selections from the Armory Art Center, through Saturday.

"15 Surfboards by 15 Shapers" exhibition by Tony Arruza, through Jan. 21.

Fredi Cohen Solo Exhibition, opens Saturday through Jan. 14.

Moneta Solo Exhibition, opens Saturday through Jan. 14.

Paley Foundation Medical Illustrations by Pamela Ross, through Jan. 21 at the North Gallery.

Dead Images: Photographs of the Grateful Dead from the archives of Robbi Cohn, through Jan. 4.

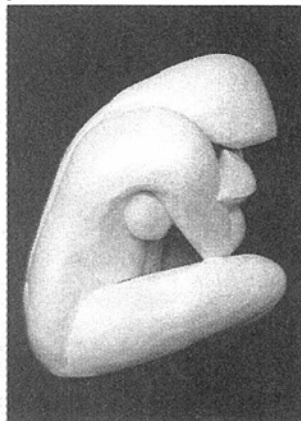
Whitespace

Private contemporary art museum and exhibition space, 2805 N. Australian Ave., West Palm Beach. Call 842-4131;

whitespacecollection.com or Whitespace@Mordes.net. Open 1-4 p.m. Saturdays and Sundays until April 2.

David Adamo: Nature sculptures: Ongoing through April 2

Whitespace special projects: Cat del Buono, Andrea Fraser, Beatriz Millar, Annemieke Broekink, Wilma Bulkin Siegel, and TD Gillespie. Through April 2.



Courtesy of Cultural Council

"Woman-Child, 2009" is part of Fredi Cohen's solo exhibition, opens Saturday at the Cultural Council of Palm Beach County until Jan. 14.